



RIVERFRONT LODGE

STOW & GO PROGRAM

RESIDENCE 300

MODERN STORAGE FOR EFFORTLESS OWNERSHIP

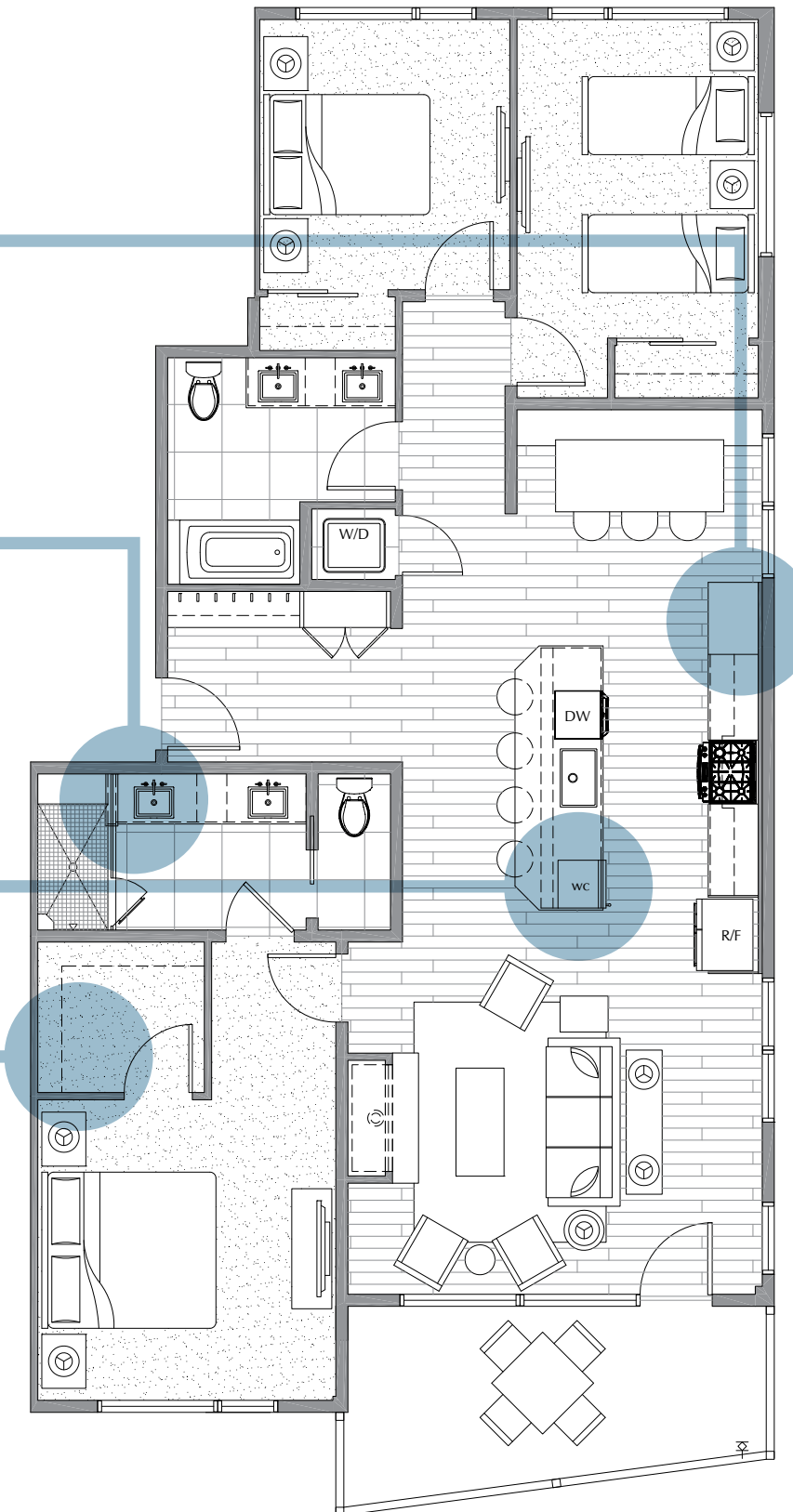
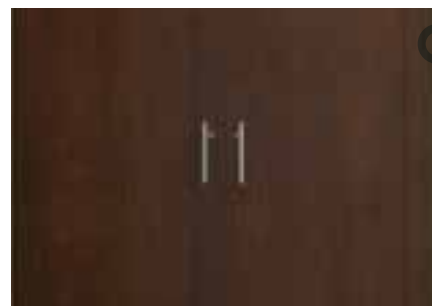
RESIDENCE 300

Riverfront Lodge has been thoughtfully designed to ensure the time you spend here is as seamless and owner-friendly as possible. This includes our attentive approach to storage with built-in, secure and spacious cabinets and closets integrated into each residence that make it convenient to leave your belongings safe and protected. It's just another one of the fantastic amenities you'll enjoy as an owner here.

Whereas most developments approach storage as an afterthought, we've integrated ample lockable spaces within each floorplan so there's no need to install or retrofit your home once you move in. With storage cages for your big items like ski gear and bikes and small lockable cabinets for personal items in the master bath and pantry, you can come and go as you please—whether you're renting your residence or simply gone for a little while.

- Secure, customized owner's closet with plenty of room for personal items.
- Lockable master bath cabinet with space for items such as toiletries, medications, hair dryer, and more.
- In the kitchen, a lockable pantry for staples like spices, condiments or whatever else you like to keep on hand.
- Secure, temperature-controlled wine cooler to lock up wine for whenever you visit next.
- Large owner cages with digital locks located in the garage offer room for your various outdoor gear and larger items such as bikes, skis, snowshoes, fishing gear, and any other toys you like to keep at your mountain home.

With the Stow & Go program, we've made it easy to enjoy all the things that draw you here in the first place—the amazing outdoor activities and spirit of the mountains that make Riverfront Lodge such an idyllic place to call home.



FOR MORE INFORMATION ON HOW THIS UNIQUE APPROACH TO STORAGE SEAMLESSLY INTEGRATES WITHIN EACH FLOORPLAN, PLEASE ASK ONE OF OUR SALES TEAM MEMBERS TO WALK YOU THROUGH THE RESIDENCE LAYOUTS.



FOR MORE INFORMATION

VISIT OUR SALES CENTER IN THE WESTIN LOBBY

970.331.9676

TheRiverfrontLodge.com